

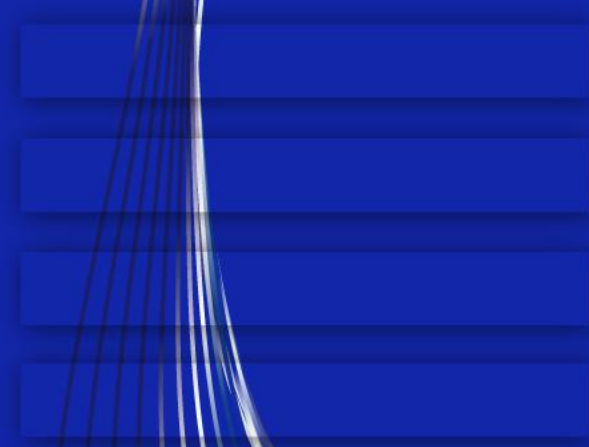


An ITG Company

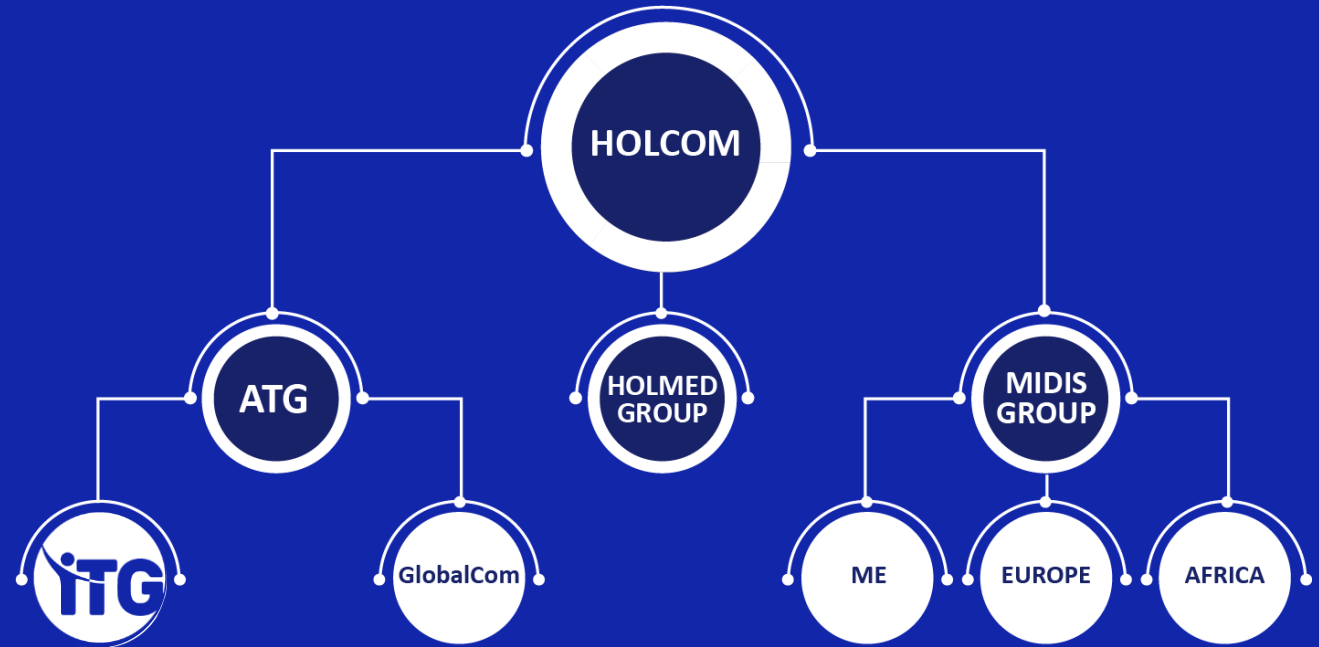
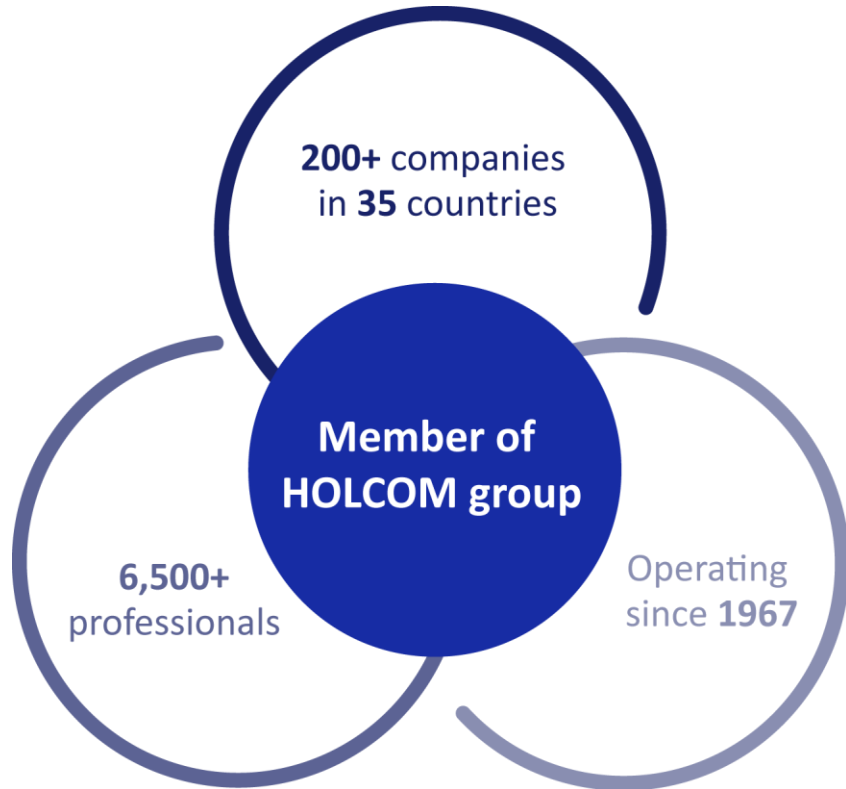
# CORPORATE PROFILE 2026

---

**Camille Ziade**  
*General Manager*



# OUR ROOTS



# OUR AFFILIATES

## Software & Solutions

AMIST

BRITGE

IMS

ITB

KLAREO

MDSL

PRIMEWARE

## Enterprise & Services

ABSEGA

CORRUS

COPYTECH  
SMART BUSINESS SOLUTIONS

Crystal  
Networks

MIDWARE  
data systems

TELESUPPORT  
International

## Site & Power

ECOSYS

MES  
Mideast Energy Solutions

MPS  
Mideast Power Systems

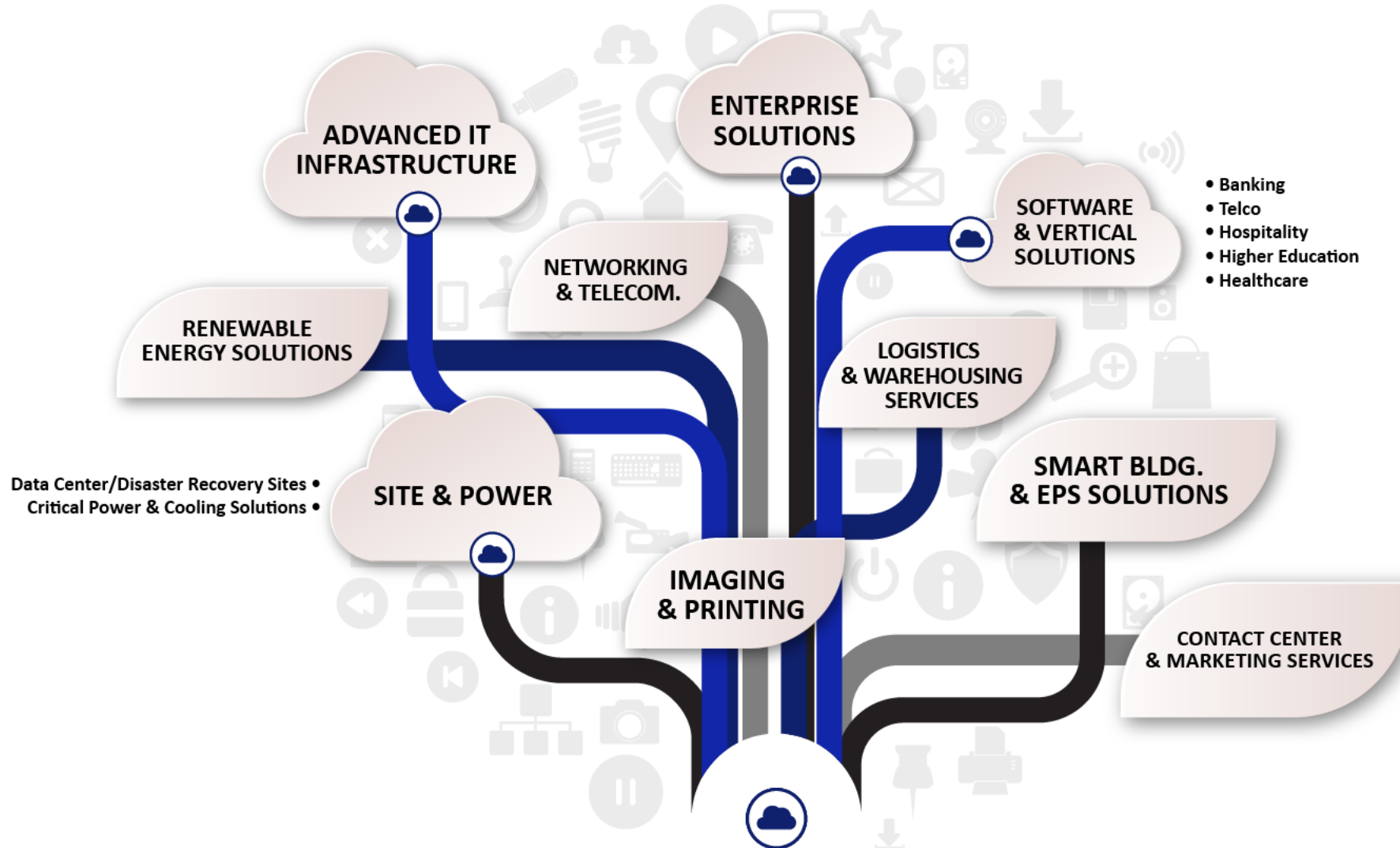
## Distribution & Retail

460estore  
An ITG Company

PCDealNet

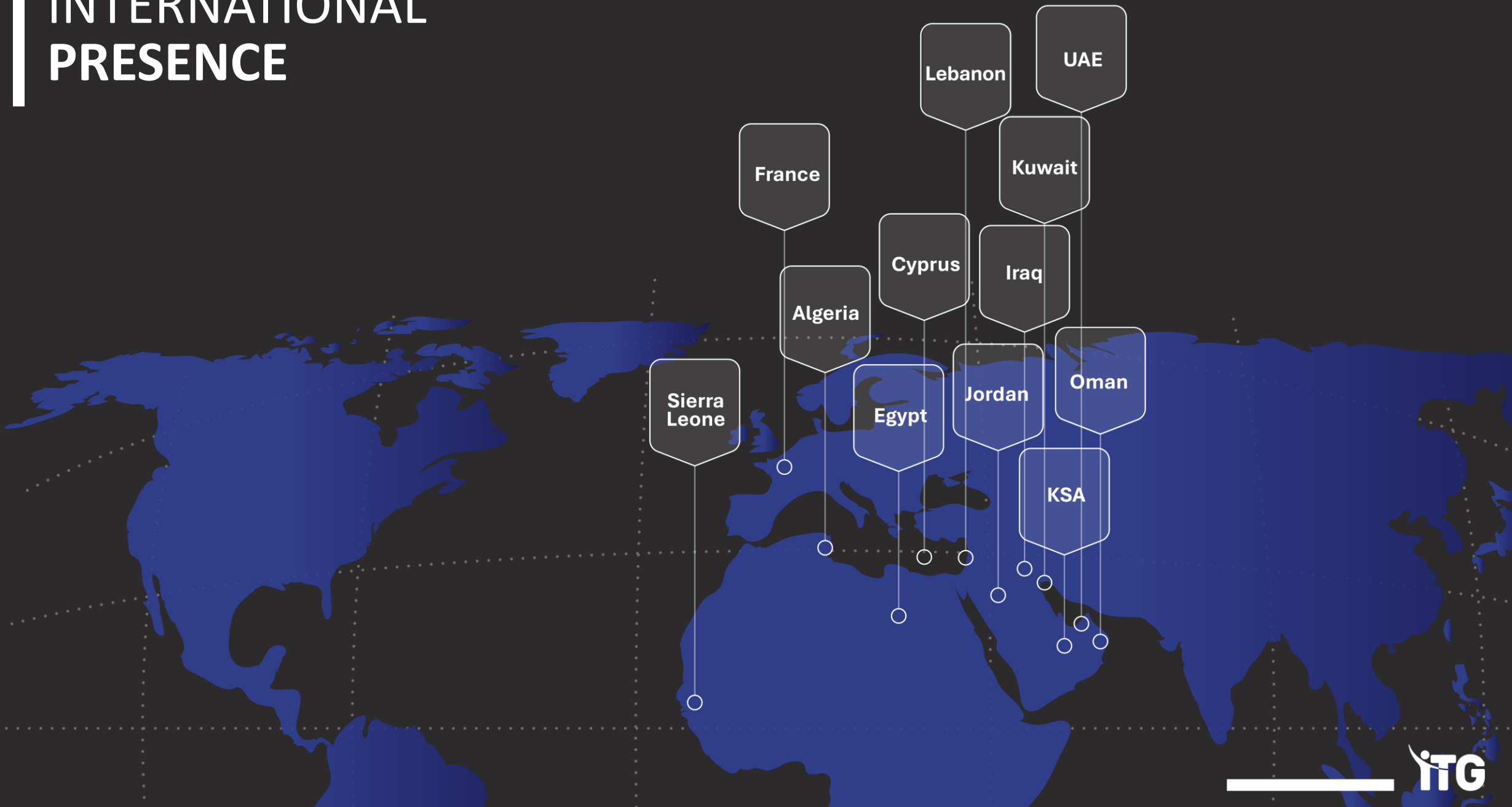
X-TREME  
LOGISTICS

# OUR SOLUTIONS TREE



Also available as a CLOUD-based service

# INTERNATIONAL PRESENCE



# MISSION STATEMENT

Our mission is to offer information technology solutions  
And services to vertical markets, providing business advantage.

It is vital for us to succeed in our quest for quality;  
Our goal is to get the complete satisfaction of our customers.



**Commitment to service quality:**

MDSL's quality system is certified since May-2003, in compliance with ISO 9001 standard for the "Provision & Development of Information Technology Solutions & Services".

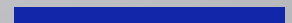


# EXPERTISE



**TELCO SOLUTIONS**

**BANKING SOLUTIONS**



# EXPERTISE BANKING SOLUTIONS



Knowledge of the local/regional requirements



Banking expertise built around the functionalities of the proposed solutions

- Core Banking
- Electronic Fund Transfer (EFT) and E-payments



Mastering the IT solutions that we propose, to deploy & support solutions in accordance with the banks' requirements



Flexibility & agility in customizing solutions to clients requirements



Track record based on years of successful solutions implementations at banks, in the Middle East

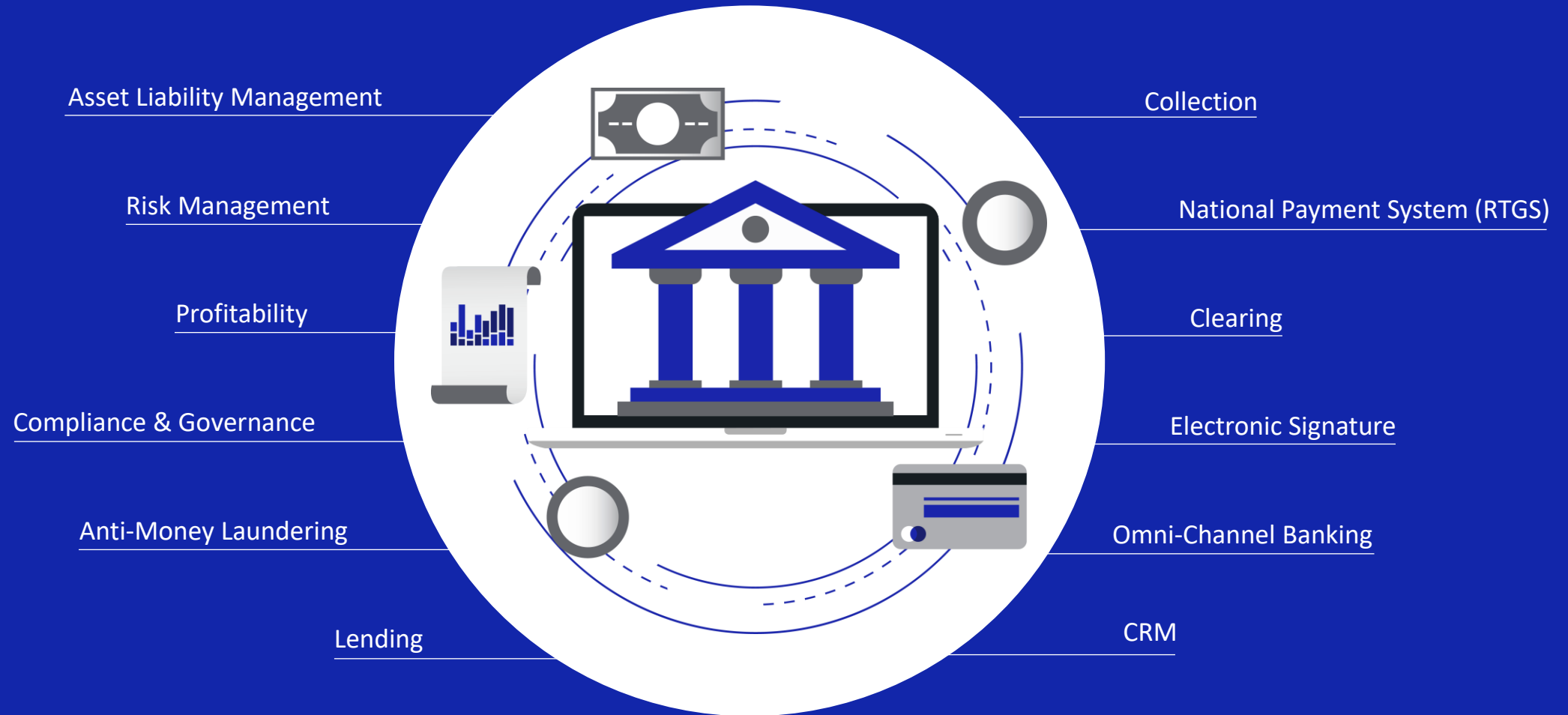


Understanding the banking business from an IT perspective



# EXPERTISE BANKING SOLUTIONS

*Core Banking*



# EXPERTISE BANKING SOLUTIONS

*EFT*

- Payment Hub | Transaction switching
- Merchant Acquiring
- Card Issuing
- POS terminals
- Tokenization
- Fraud Management
- Mobile Payment Tokenization
- Software Simulation & Stress Testing
- Reconciliation & Cash Management



# EXPERTISE TELCO SOLUTIONS

Convergent Billing

Customer Care

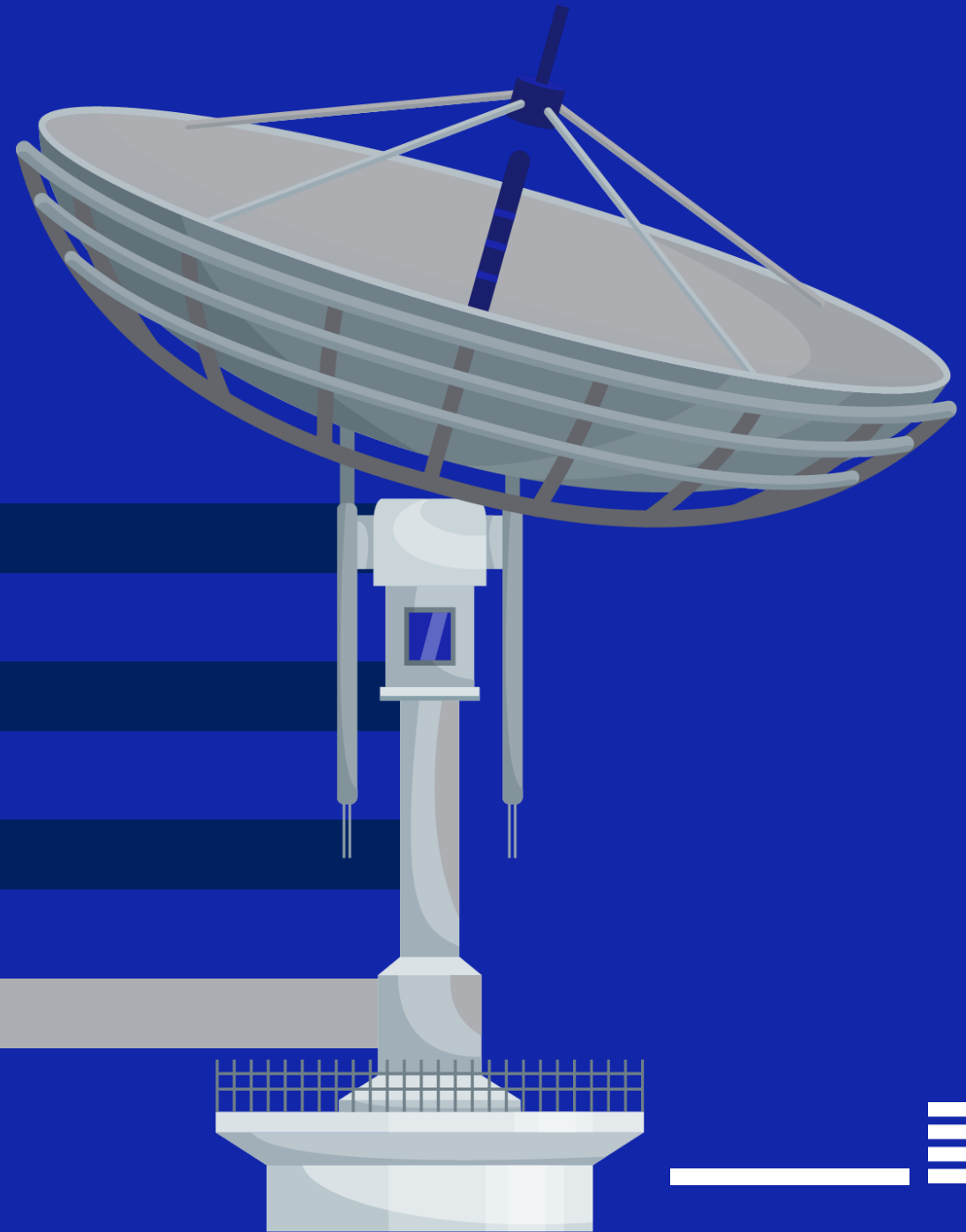
Revenue Assurance

Fraud Management

Risk Management

Profitability

Asset Management



# EXPERTISE END-TO-END DIGITAL SECURITY

Entrust offers industry-leading security solutions  
trusted by governments and enterprises worldwide:

## **Public Key Infrastructure (PKI):**

Secure digital identities, email encryption, and digital signatures

## **Identity & Access Management:**

Multi-factor authentication and role-based access controls

## **SSL/TLS Certificates:**

Secure communications with high-assurance certificates and lifecycle management

## **Data Protection & Encryption:**

End-to-end encryption, tokenization, and Hardware Security Modules (HSMs)

## **Digital Signing Solutions:**

Compliant eSignatures with full audit trails

## **Cloud & Mobile Security:**

Secure mobile credentials and cloud-based PKI services

# TECHNOLOGY EXPERTISE



Websphere, Weblogic

C, C++, C#, ASP, Java,  
Perl, PHP, Ajax



Oracle data base administration,  
Oracle Forms & Reports

Microsoft SQL, MySQL, PostgreSQL, and MongoDB



# SERVICES

## From Consultancy ... to Support

### Business & Product Consultancy

Initiating the process by understanding the client's objectives and aligning the solution accordingly

### Requirement Analysis

Gathering and documenting detailed software requirements

### Project Management

Planning and managing the project from the outset and throughout the lifecycle

### Software Customization

Tailoring the solution to meet specific business needs

### System Integration

Ensuring the solution works seamlessly with existing systems

### Installation & Configuration

Deploying and configuring the software in the target environment

### Data Migration

Transferring relevant data from legacy systems to the new environment

### Assistance in Testing

Supporting comprehensive testing to validate performance and functionality

### Customized Training

Delivering training sessions tailored to the client's user base

# STRATEGIC ALLIANCES

## WORLD TECHNOLOGY LEADERS

### BANKING

**TURN  
KEY**  
SYSTEMS

**CODEBASE**  
TECHNOLOGIES

 Wolters Kluwer

**BUSINESS  
NEXT**

 **ozone** API

**sas** | THE  
POWER  
TO KNOW.

**o1**

### EFT

**FIS**

  
**ENTRUST**

 **RRDM**  
SOLUTIONS

**D8 Corporation**

 **EFTlab**

 **Topwise**

### ENTERPRISE

**SECTIGO**<sup>®</sup>

### TELCO

  
**CSG**  
TOGETHER, YOU WIN.

 **SUBEX**



# MAJOR CUSTOMERS

## BANKING SECTOR



**Bank Audi**



**BYBLOS BANK**

الاعتماد اللبناني  
**CREDIT LIBANAIS**

**FRANSABANK**



**BBAC**

**BANQUE LIBANO-FRANÇAISE**  
Partenaire de vos ambitions

**BSL**

**Creditbank** SAL

**BLCbank**  
FRANSABANK GROUP  
We deliver what matters

**FNB**  
FIRST NATIONAL BANK

**AL-MAWARID Bank**  
بنك المواردي

**bcn**  
بنك الاعتماد الوطني  
Banque de Crédit National S.A.L.

**IBL BANK**

**SARADARBANK**

**areeba**

**M**  
Credit Card Management sal

**BML**  
بنك ممبر لبنان



**BANQUE BEMO**

**البنك العربي**  
ARAB BANK

**Lebanese Swiss Bank**  
البنك اللبناني السويسري  
sincere banking

**Finance Bank** S.A.L.

**alBaraka**

**EMIRATES LEBANON BANK**  
بنك الإمارات ولبنان



# MAJOR CUSTOMERS

## BANKING SECTOR

### EGYPT



### JORDAN



# MAJOR CUSTOMERS

## BANKING SECTOR

### IRAQ

National bank of Iraq  
المصرف الأهلي العراقي

شركة البوابة الوطنية للدفع الالكتروني  
National Gate For Electronic Payment

المصرف الصناعي  
INDUSTRIAL BANK

### LIBYA

moomalat  
مؤسسة الخدمات المالية

### KUWAIT

بيت التمويل الكويتي  
KFH

### BAHRAIN

afs

بنك البحرين  
Credit

### QATAR

CQUR

### ALGERIA

البنك العربي  
ARAB BANK

### OMAN

بنك بيروت  
Bank of Beirut - Oman Branches  
Banking Beyond Borders

بنك عُمان العربي  
OMAN ARAB BANK

### UAE

بنك دبي التجاري  
Commercial Bank of Dubai

البنك العربي  
ARAB BANK



# MAJOR CUSTOMERS

## OTHER SECTORS





An ITG Company

**THANK YOU**

For more info  
[www.mdsl.com.lb](http://www.mdsl.com.lb)